



#### ❖ CCLT APPLICATION

FlexDur CCLT-S single side or model CCLT-D double side, designed to fit air handling light fixtures of the surface or regressed type. Both single and dual types shall be equipped with hold down tabs to align and lock the diffuser to the light fixture. Single side units shall be equipped with a rigid support to assure an upright orientation.

An integral air pattern control shall be provided if the specified light fixture isn't equipped with a pattern control. The pattern and volume damper shall be galvanized steel construction and the exposed air discharge slot painted flat black. Insulation shall be available as 5mm P.E form internally lined.

#### ❖ CCLT STANDARD CONSTRUCTION / FEATURES

FlexDur troffer diffusers consist of two basic diffuser configurations. The single side supply model CCLT-S provides concealed air distribution with horizontal or vertical air discharge patterns, and is available for nominal 24", 36" and 48" light fixtures. The standard boot height is 8¾". Other heights are available to meet special applications. The standard inlet sizes are 5" or 6" oval. Other sizes are available upon request.

**The double side** supply model CCLT-D provides air deflector with horizontal or vertical air discharge patterns. The double side diffusers are compatible with most light fixtures in sizes 1' x 4', 2' x 2', 2' x 4' and 4' x 4'. The standard boot heights are 8-3/4". The boot height provided is dependent on the light fixture that is specified. These troffer diffusers are available with top or side inlet arrangements.

**The single side** supply model CCLT-S and dual side supply model CCLT-D are both supplied with an integral butterfly volume damper that allows complete balancing by equalizing the air flow along the spigot. Air pattern controls are provided when the light fixtures specified aren't equipped with a pattern deflector. Diffusers are available uninsulated or with internal or external insulation. The external insulation is 1" x 2 lb. density. Troffer diffusers are galvanized steel construction and exposed slot area is painted black.

- Single or dual side diffusers.
- Custom matched to light fixture.
- Choice of uninsulated, internal or external insulated construction steel construction.
- Galvanized steel construction as standard zincaluminum construction as option.
- Exposed slot area painted black.

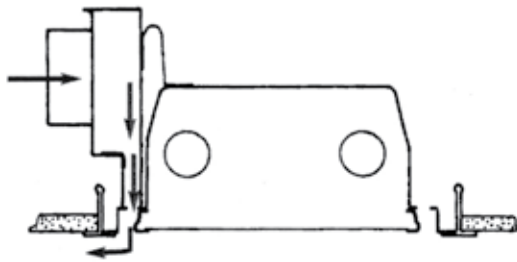


❖ **CCLT ORDER KEY INFORMATION**

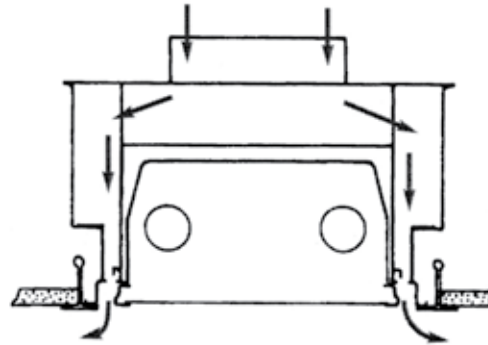
CCLT - S - S - 48 - V

Inlet	Vertical (V), Horizontal (H)
Norminal Lenght	24" , 36" , 48"
Type	Single (S), Double (D), Quadruple (Q)
Material	Galvanised Steel (S), Aluminum Zinc (AZ)
Model	CCLT- Light Troffer (Ceiling Component)

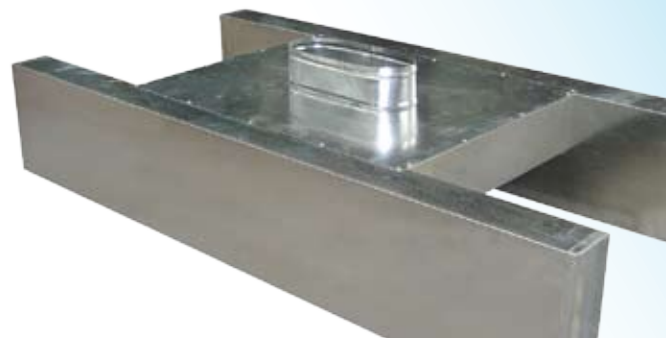
**SINGLE TROFFER DIFFUSER**



**DOUBLE TROFFER DIFFUSER**



Available broken down or fully assembled and ready for installation.



### ❖ CCLT-S PERFORMANCE DATA - SINGLE SIDE TROFFER

#### 24 Inch For Use With 2' x 2' Light Fixture

CFM		30	40	50	60	70	80	90	100
Throw - Ft.	Vertical	3-4	4-6	5-7	6-8	7-9	8-10	9-10	9-11
	Horizontal	6-8	7-10	8-12	9-13	10-14	11-15	12-16	13-17
Min: Ps ("W.G)	5" Inlet	.04	.08	.13	.19	.25	.32	.41	.50
	6" Inlet	.04	.08	.12	.18	.24	.31	.39	.48
NC Level		-	-	22	29	33	36	41	44

#### 36 Inch For Use With 3' x 3' Light Fixture

CFM		40	50	60	70	80	90	100	110
Throw - Ft.	Vertical	3-5	4-6	5-7	6-8	6-9	7-9	7-10	8-10
	Horizontal	4-6	5-8	6-10	8-11	9-13	10-14	11-15	12-16
Min: Ps ("W.G)	5" Inlet	.04	.06	.09	.12	.17	.21	.27	.32
	6" Inlet	.04	.06	.08	.11	.15	.19	.24	.29
NC Level		-	-	-	23	27	32	35	39

#### 48 Inch For Use With 1'x4'-4'x4' Light Fixture

CFM		50	60	70	80	90	100	110	120
Throw - Ft.	Vertical	3-4	4-5	5-6	5-7	6-8	6-8	6-9	7-9
	Horizontal	4-6	5-7	5-8	6-9	7-10	7-11	8-12	9-13
Min: Ps ("W.G)	5" Inlet	.04	.06	.08	.11	.15	.17	.21	.25
	6" Inlet	.04	.06	.08	.11	.14	.16	.20	.23
NC Level		-	-	-	23	27	30	34	37

#### Notes:

- Actual performance in the field may vary.
- Tests were conducted in isothermal conditions.
- Sound levels are based on a room absorption of 10 db re 10<sup>-12</sup> watts.
- Throw data is presented for terminal velocities of 100 and 50 ft./min.

#### Notes on Units of Measure Used :

- Air flow is given in cubic feet per minute (CFM).
- Static Pressure is given in inches of water (w.g.).
- Sound data is given in NC.
- Throws are given in feet to terminal velocity.
- "-" indicates an NC below 20.

### ❖ CCLT-D PERFORMANCE DATA - DOUBLE SIDE TROFFER-TOP INLET / VERTICAL INLET

#### 24 Inch For Use With 2' x 2' Light Fixture

CFM		50	60	70	80	90	100	110	120
Throw - Ft.	Vertical	3-5	4-6	5-7	5-8	6-8	6-9	7-9	7-10
	Horizontal	2-4	4-8	6-10	7-10	7-11	8-11	8-12	9-13
Min: Ps ("W.G)	5" Inlet	.05	.07	.09	.12	.15	.18	.22	.26
	6" Inlet	.04	.06	.08	.10	.13	.16	.19	.23
NC Level		-	-	-	22	26	31	33	36

#### 36 Inch For Use With 3' x 3' Light Fixture

CFM		90	100	110	120	130	140	150	160
Throw - Ft.	Vertical	3-5	3-6	4-6	4-6	5-7	6-7	6-8	6-9
	Horizontal	4-6	5-7	6-8	6-9	7-9	7-10	8-11	8-12
Min: Ps ("W.G)	5" Inlet	.08	.10	.12	.15	.18	.20	.23	.26
	6" Inlet	.08	.09	.11	.13	.16	.18	.20	.23
NC Level		20	23	26	28	32	33	34	37

#### 48 Inch For Use With 1' x 4'- 2' x 4' or 4' x 4" Light Fixture

CFM		60	80	100	120	140	160	180	200
Throw - Ft.	Vertical	1-2	1-3	2-3	2-4	3-5	4-6	5-7	6-8
	Horizontal	2-3	2-4	3-5	4-6	4-7	5-8	6-9	7-10
Min: Ps ("W.G)	5" Inlet	.03	.06	.09	.13	.17	.22	.28	.35
	6" Inlet	.03	.05	.08	.10	.14	.18	.23	.29
NC Level		-	-	21	24	31	33	37	41

#### Notes:

- Actual performance in the field may vary.
- Tests were conducted in isothermal conditions.
- Sound levels are based on a room absorption of 10 db re 10<sup>-12</sup> watts.
- Throw data is presented for terminal velocities of 100 and 50 ft./min.

#### Notes on Units of Measure Used :

- Air flow is given in cubic feet per minute (CFM).
- Static Pressure is given in inches of water (w.g.).
- Sound data is given in NC.
- Throws are given in feet to terminal velocity.
- "-" indicates an NC below 20.

### ❖ CCLT-D PERFORMANCE DATA - DOUBLE SIDE TROFFER-SIDEINLET / HORIZONTAL INLET

#### 24 Inch For Use With 2' x 2' Light Fixture

CFM		50	60	70	80	90	100	110	120
Throw - Ft.	Vertical	3-5	4-6	5-7	5-8	6-8	6-9	7-9	7-10
	Horizontal	2-4	4-8	6-10	7-10	7-11	8-11	8-12	9-13
Min: Ps ("W.G)	5" Inlet	.05	.06	.08	.10	.13	.16	.19	.23
	6" Inlet	.04	.06	.08	.10	.12	.15	.18	.21
NC Level		-	-	-	21	25	29	32	36

#### 36 Inch For Use With 3' x 3' Light Fixture

CFM		90	100	110	120	130	140	150	160
Throw - Ft.	Vertical	3-5	3-6	4-6	4-6	5-7	6-7	6-8	6-9
	Horizontal	4-6	5-7	6-8	6-9	7-9	7-10	8-11	8-12
Min: Ps ("W.G)	5" Inlet	.07	.08	.10	.12	.14	.17	.19	.22
	6" Inlet	.06	.07	.09	.11	.13	.15	.17	.19
NC Level		-	20	23	25	29	30	33	34

#### 48 Inch For Use With 1' x 4'- 2' x 4' or 4' x 4" Light Fixture

CFM		60	80	100	120	140	160	180	200
Throw - Ft.	Vertical	1-2	1-3	2-3	2-4	3-5	4-6	5-7	6-8
	Horizontal	2-3	2-4	3-5	4-6	4-7	5-8	6-9	7-10
Min: Ps ("W.G)	5" Inlet	.02	.04	.07	.10	.13	.16	.21	.26
	6" Inlet	.02	.04	.06	.08	.11	.15	.19	.23
NC Level		-	-	-	21	26	30	33	37

#### Notes:

- Actual performance in the field may vary.
- Tests were conducted in isothermal conditions.
- Sound levels are based on a room absorption of 10 db re 10<sup>-12</sup> watts.
- Throw data is presented for terminal velocities of 100 and 50 ft./min.

#### Notes on Units of Measure Used :

- Air flow is given in cubic feet per minute (CFM).
- Static Pressure is given in inches of water (w.g.).
- Sound data is given in NC.
- Throws are given in feet to terminal velocity.
- "-" indicates an NC below 20.

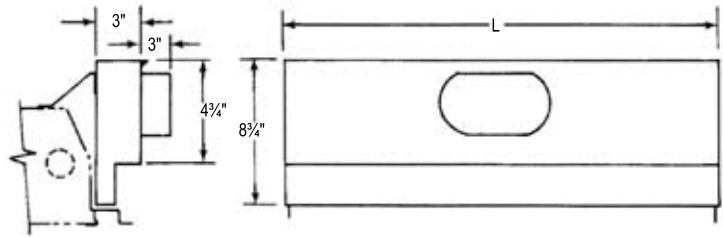
### ❖ CCLT-S/D DIMENSIONAL DATA - SINGLE AND DOUBLE TROFFER DIFFUSER

#### ■ CCLT-S SINGLE TROFFER DIFFUSER

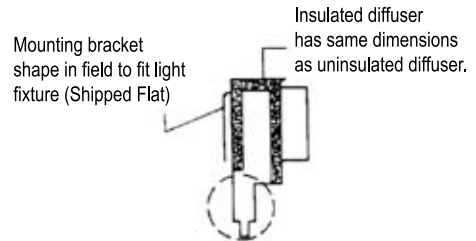
##### DIMENSIONS LISTED IN INCHES

Fixture Length	*Air Diffuser Length
2 foot	20
3 foot	27
4 foot	40

Note:  
Standard diffuser dimensions are stated. Actual length will vary with light fixture manufacturer. To insure compatibility, list light fixture manufacturer and model number.



UNINSULATED



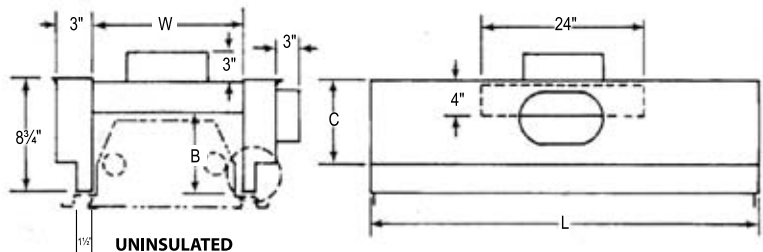
INTERNALLY INSULATED

#### ■ CCLT-D DOUBLE TROFFER DIFFUSER

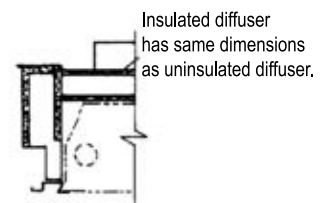
##### DIMENSIONS LISTED IN INCHES

Fixture Size	Air Diff. DIM.	
	W	L
1x4	9	40
2x2	21	20
3x3	33	27
2x4	21	40
4x4	45	40

Note:  
Standard diffuser dimensions are stated. Dimensions A, B, C, W and L will vary with light fixture manufacturer. To insure compatibility, list light fixture manufacturer and model number, ceiling clearance required is diffuser height plus 1/4", plus amount troffer slot is regressed above ceiling line. Top inlet units extend above this dimension.



UNINSULATED



INTERNALLY INSULATED

#### ■ CCLT Recommended NC Criteria

NC	Application
Below NC 25	Extremely quiet. Suitable for pickup of all sound.
NC 30	Very quiet. For residences, theaters, libraries, executive offices.
NC 35	Quiet. For schools, courtrooms, churches, private offices.
NC 40	For general offices, labs, dining rooms. Telephone use satisfactory.
NC 45	For retail stores, cafeterias, lobby areas, reception areas, telephone use occasionally difficult.
NC 50	For steno pools, machine rooms, telephone use slightly difficult.